



**WECO**

# User Manual

LED FLEX 05.BND



Manufactured under ISO 9001

Version UM.BND.230.17D.EN

# 1- Installation

1. Lower the LED FLEX down the shaft while holding it firmly underneath the connection point with the power cable.



Do not suspend the LED FLEX by the power cable, as this may cause the electrical connection to loosen.

2. Along the LED FLEX drill 8mm holes and insert the push-plug , as shown.



3. Secure the LED FLEX to the plugs with the cable ties provided.



4. Continue with the installation of the LED FLEX.

NOTE: 2 or 3 fixings may be required for the first meter / top of the shaft; depending on the nature of the wall. Thereafter, a fixing every 1 to 2 m should suffice.

5. Power-on the LED FLEX.

## 2- Warning instructions

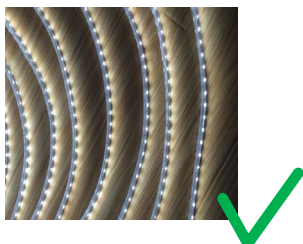
1. Do not bend or squeeze the LED FLEX sharply.



2. The LED FLEX may cut every meter - only where marked.
3. The LED FLEX is designed for high luminance. The lifetime (mttf) of the LEDs is much higher compared to fluorescent tubes. Nevertheless we recommend a cool down phase after 12 hours of continuous operation to maximize the lifetime.
4. DO NOT suspend the LED FLEX when holding the power cable as this may loosen the connection at the top between the power cable and the main length of the LED FLEX.
5. The maximum length of the FLEX is 50 m.
6. Please make sure that the PVC-coat is not damaged. Otherwise it may short circuit.
7. Do not execute any electrical installation while the LED FLEX is energized.
8. Do not put the LED FLEX into water.

## 3- Technical features

Input voltage	230VAC±10%, 50/60HZ
Max current	4A
Lumen/m	700
Power/m	11W
CCT	6500K±8%
Working temperature	-20 °C to 50 °C
LED model	SMD5050
Diode/m	60x
Power cable type	H03VVH2-F
	2 core / 0.75mm <sup>2</sup>



1. The LED FLEX is not lit when powered on.

- *Power cable is damaged or broken. Check for integrity.*

- *The connection between the power cable and the LED FLEX has loosened. Push the power cable and the LED FLEX together firmly.*

2. One meter section in the middle of the LED FLEX does not light.

- *Rough handling has broken the circuits at the rear of the LED FLEX. Replace relevant section.*

3. PVC coating of the LED FLEX feels "too hard" and the LED FLEX is difficult to work with.

- *Environmental temperature is too low.*

4. Strange odor and the PVC coating of the LED FLEX feels "too soft"

- *Environmental temperature is too high causing heat accumulation. Power off and cool down the LED FLEX.*